

# CalDAV Synchronizer Setup

## **Enhanced mailbox only.**

Enhanced mailboxes allow you to sync calendars (CalDAV) and contacts (CardDAV) across multiple devices with applications that support the CardDAV/CalDAV protocols.

In Outlook you can sync via CalDAV / CardDAV by installing the caldav synchronizer - an Open Source plugin that you can install on your computer and use with your Outlook. This plugin supports Outlook 2007 to Outlook 2016 and is Free and Open-Source Software (FOSS), licensed under AGPL 3 and developed by [Alexander Nimmervoll](#) and [Gerhard Zehetbauer](#). You can find the project on [Github](#) and [SourceForge](#).

This is a step-by-step guide to installing and setting up the caldav synchronizer plugin.

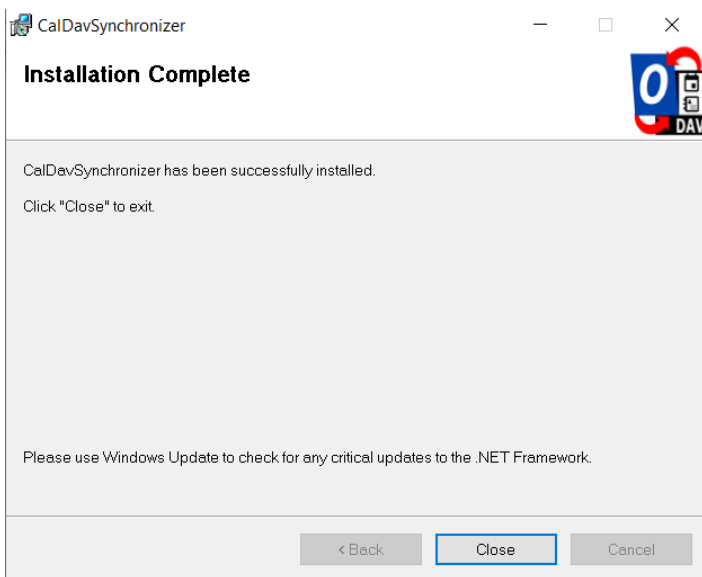
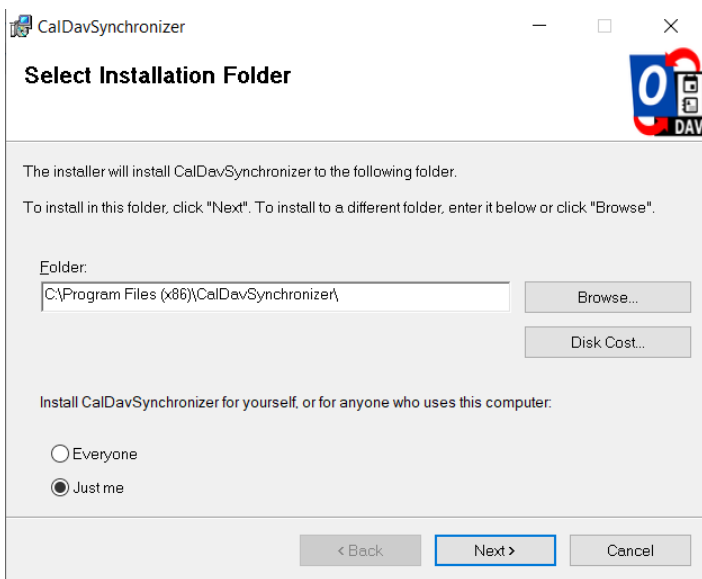
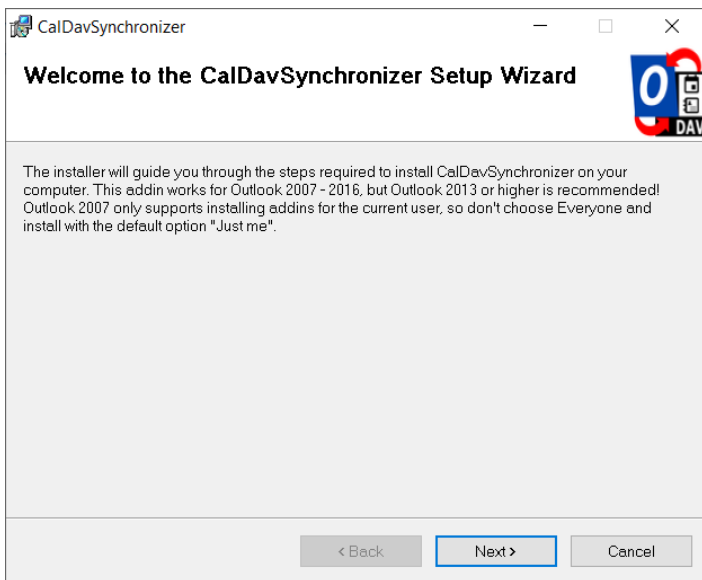
## 1. Download the caldav synchronizer

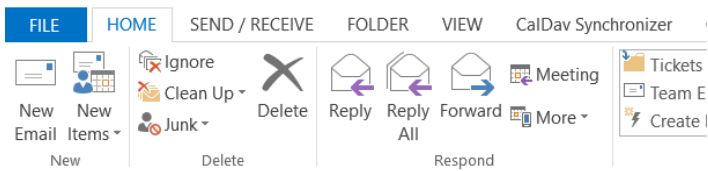
You can download the caldav synchronizer plugin from the project's website:

<https://caldavsynchronizer.org/>.

## 2. Install the caldav synchronizer

Extract the downloaded .zip file and start the installation. Once the installation is complete, you will see a new ribbon called "CalDav Synchronizer" in your Outlook.

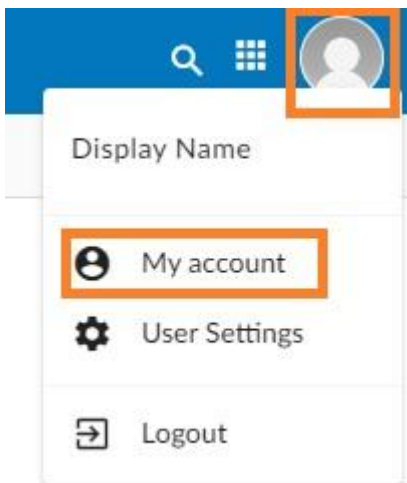




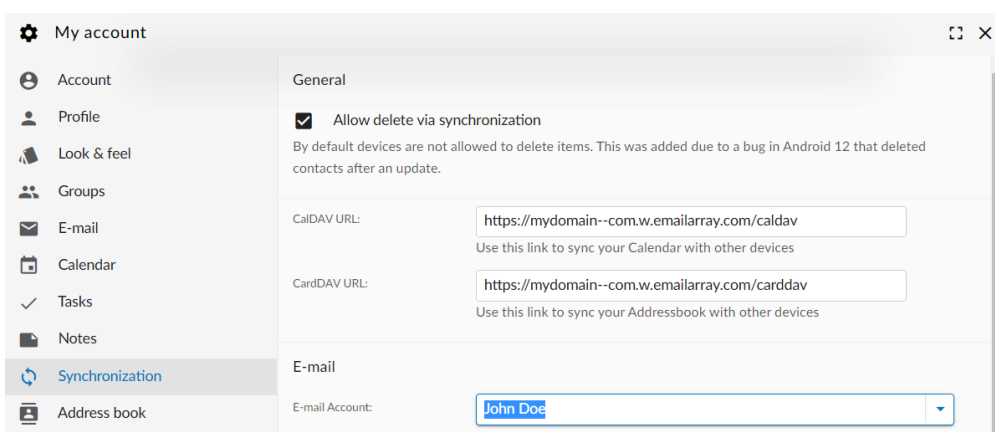
### 3. Get your CalDAV / CardDAV URLs

First, you need to obtain your CalDAV / CardDAV URLs. CalDAV is for Calendar synchronization, and CardDAV is for Contacts.

- Log into the Webmail using your full **e-mail address** and your **current e-mail password**
- Click on the **User** icon from the top right to activate the menu. Then click on **My account**

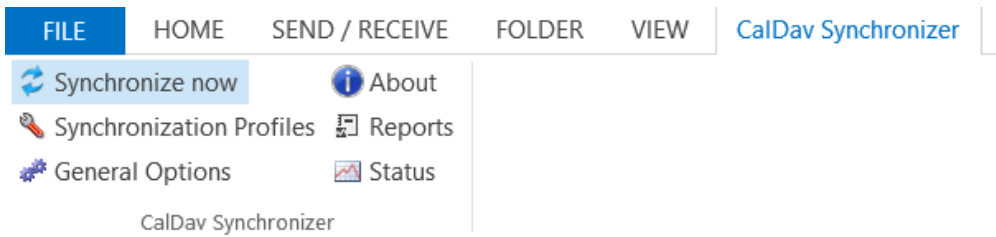


- In the **Synchronization** tab, find the CalDAV / CardDAV URL. You will need to copy and use these URLs with the caldavssynchronizer.

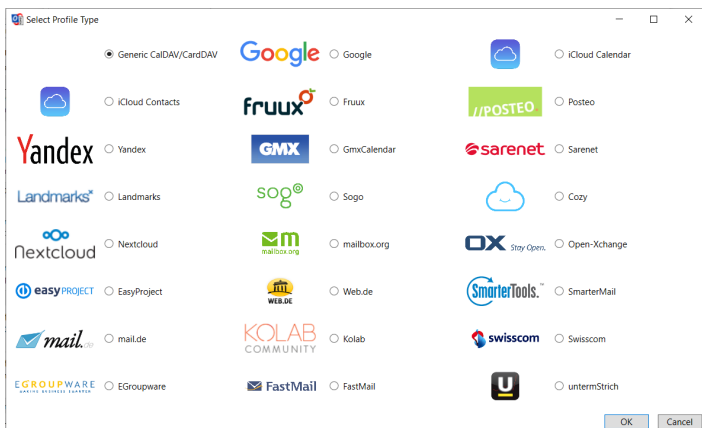
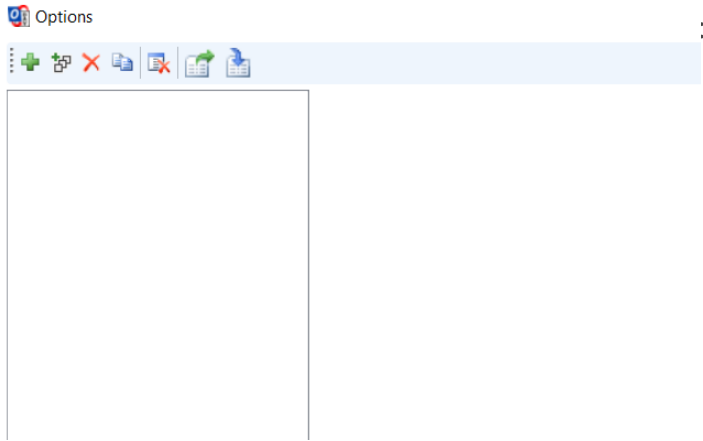


### 4. Set up the caldavssynchronizer

- Open **Outlook** on your computer.
- Go to the **CalDav Synchronizer** ribbon. Click on the **Synchronization Profiles** option.



- Click on the **Add** button (plus sign) to set up a new Calendar or Addressbook to sync. **DAV.**

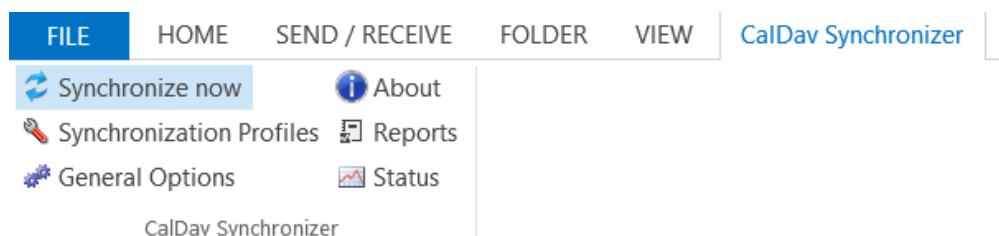


- A new profile window will show. Fill in the following details:
  - Name: give a name to this profile. For example, Calendar - personal, or Calendar - work.
  - Outlook folder: create a new folder in the **Calendar Items** or **Contact Items** category. You can also choose an existing Calendar or Contact folder.
  - Server Settings: these are your CalDAV / CardDAV details:
    - **DAV URL**: if you're adding a **Calendar**, use the **CalDAV** URL obtained from the Webmail at step 3. This URL should be in the form of https://mydomain-com.w.emailarray.com/caldav - be sure to replace mydomain-com with your own domain name. If you're adding a **Contact** list, use the **CardDAV** URL.
    - **Username**: your full email address

- **Password:** your email password
- **Email address:** your full email address
- Click on the **Test or discover settings** button. If you have multiple Calendars (or Contact lists) you can choose which one of them to sync with this Profile.
- Sync Settings: choose how and how often to synchronize the Profile. **We recommend the Outlook ↔ Server (Two-Way) synchronization mode.**
- After you finish the setup, you can choose to synchronize items immediately after change by ticking the option in the Outlook Settings. Please note you can only activate this option after you have finished the above setup and clicked on the Test or discover settings.
- Click on the **OK** button to finish setup and save changes.

## 5. Synchronize your new Profile

If the synchronization didn't start automatically, you could manually sync by going to the CalDAV Synchronization ribbon in Outlook and clicking the **Synchronize now** option.



You can now set up a new Calendar or Contact list by adding a new Profile (step 4).

Revision #2

Created 16 August 2024 02:32:50 by Admin

Updated 16 August 2024 02:44:19 by Admin